



Leasing Opportunity

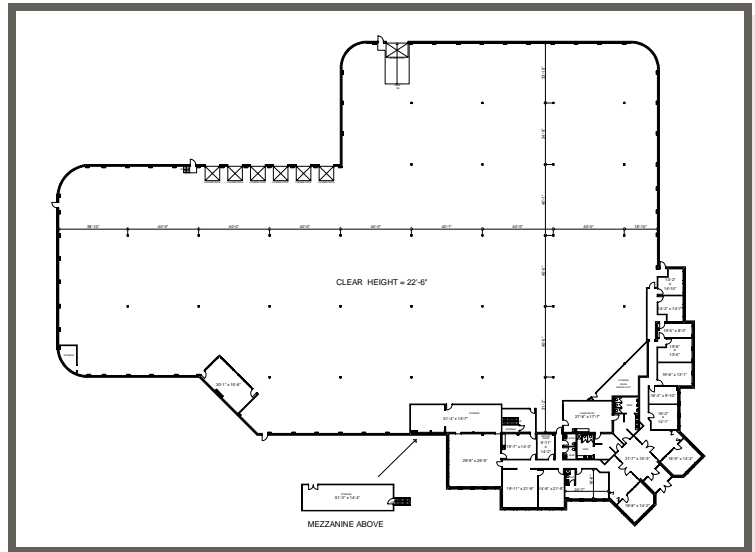
- Photograph
- Floor Plan
- Location Map
- Leasing Contact

6500 Tomken Road
Mississauga, Ontario

An attractive freestanding building with fantastic corporate exposure, located on the North West of Tomken Road and Courtney Park. Immediate access to highways 410, 401, 403, 407. Amenities are close by.



- Rentable Area: 68,541 square feet
- Office Area: Approximately 10%
- Asking Net Rent: \$5.50 psf
- TMI: \$2.98 psf (taxes based on commercial rate)
- Shipping: 6 Truck Level Doors
1 Drive In Door
- Clear Height: 22'-6"
- Available: Immediately

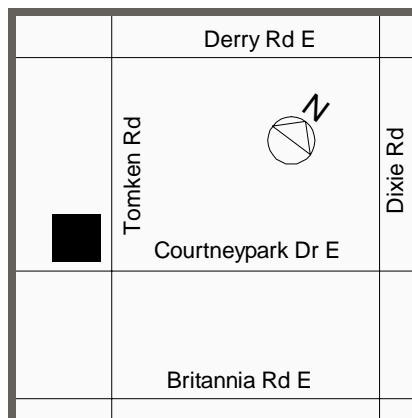


Leasing Contact

Melissa Chu Taylor, Leasing Manager
Bentall Real Estate Services LP

Tel: 416.674.3579
Fax: 416.674.7738
Email: mchu@bentall.com

Web: www.bentall.com



"Client"



Version 2a

Prepared: Feb 12, 2007

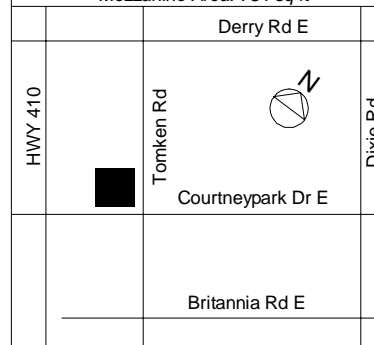
Measured: Jan 16, 2007

**6500 Tomken Road
Mississauga, Ontario**

Entire Building

Office Area: 9,910 sq ft
Warehouse Area: 57,847 sq ft
Total Rentable Area: 67,757 sq ft

Mezzanine Area: 784 sq ft



This work product has been prepared by Extreme Measures Inc. pursuant to a contract with the Client for the sole benefit of and use by the Client. No third party may rely on this work product without the receipt of a reliance letter from Extreme Measures Inc.

extreme measures inc. Tel: 416.323.2858
Fax: 416.323.0855
mail@xmeasures.com
www.xmeasures.com

